

REUNITY RESOURCES



ANNUAL REPORT 2023


*Reunity Resources
1829 San Ysidro Crossing
Santa Fe, NM 87507*

*www.reunityresources.com
ein: 45-229-8696*



TABLE OF CONTENTS

- A Word from the Co-founders
- About Reunity
- Food Access
- Food Systems
- Reunity Farm
- Waste Diversion
- Healthy Soils
- Community
- Education
- 2023 by the Numbers
- Awards Through the Years
- Community Participation Matters
- Partners in Sustainability
- Community Collaborators
- 2023 Donors
- Farm Stand Producers
- 2023 Staff
- Timeline of Firsts
- Corporate Sponsor and Foundation Logos

A close-up photograph of a branch with several purple flowers and buds. The flowers are in various stages of bloom, with some fully open and others as buds. The background is a soft, out-of-focus green and purple, suggesting a garden or field setting. The text is overlaid on the right side of the image.

**CREATING AND
EDUCATING ABOUT
COMMUNITY-SCALE
REGENERATIVE FOOD
PRODUCTION AND
CLOSED-LOOP
SYSTEMS**

A WORD FROM THE CO-FOUNDERS

Dear Reunity Community,

It is with deep gratitude that we reflect on our work together for the past twelve years. Some of you we've known since then, Tejinder's days teaching at the Santa Fe Community College, or getting started with the Farm to Restaurant program through the Santa Fe Alliance, and Juliana also teaching middle school and tabling at community events with bowls of worms and babies. It's easy to look back and connect the dots, but when we founded Reunity Resources in 2011, a lot of the programs we are operating today were just dreams and what-ifs that we talked about at dinner or wrote down on big paper. It is only through your support and participation this has all come to fruition!

Our hearts overflow with appreciation as we recount the milestones and growth that have marked our collective path. The journey of Reunity Resources has been a testament to the power of community and the resilience that emerges when we unite for a common purpose.

Navigating the terrain of regeneration and interconnectedness, much like the delicate dance of the natural world, has been both challenging and rewarding. We celebrate the strides we have all made together in co-creating community-scale solutions to waste diversion, soil health, environmental education, food systems and climate change resiliency.

In gratitude,

TEJINDER + JULIANA CIANO

Co-founders

Reunity Resources



PHOTO BY DOUGLAS MERRIAM



The roots of our work are
climate change resiliency,
food access,
environmental education
and community building.

ABOUT REUNITY

Reunity Resources was founded with the knowledge that community-scale change is necessary for our resilience in a changing world.

By creating effective closed-loop systems that allow local businesses and individuals to participate in climate change solutions, we are taking active steps together toward the world we want to live in.

Reunity started with a biodiesel collective and has since grown to include community composting, regenerative agriculture with a direct food security focus for our most vulnerable neighbors. By furthering these practices through environmental education, community engagement, and local food systems advocacy, we are sowing seeds for broader scale participation in and replication of these principles.



**1 in 5
Children in
Santa Fe
are food
insecure**

FOOD ACCESS

In Santa Fe County alone, 1 in 5 children face food insecurity each day.

This issue isn't new, but in the face of inflation, flattened wages, and crises like the pandemic, it has gotten worse. That's why making fresh, healthy food access to everyone in our community is paramount to our purpose. Hunger is both an immediate and a long term issue, and when it comes to food security within our state, we need to continue building capacity to grow, preserve and distribute food for our population.

In 2023, Reunity provided:

- 600+ meals/month to our community via our “no questions asked” 24-hour community pantry, which features produce, dried goods, and dairy products
- Fresh food to an average 50 local households per week via our food access partners—SFPS Adelante, Many Mothers, the Santa Fe Indigenous Center, and The Birthing Tree Collective
- \$7,500 in Farm Card donations to families served by these partners, which allow our community members the dignity to choose what they want, when they want it, in the Farm Stand.

We do this with through:

- 1) food donations in our 24/7 access no-questions-asked community fridge
- 2) fresh produce, ready-to-eat homemade meals featuring farm foods, and farm cards that we donate to families served by our partner organizations
- 3) food access programs in our Farm Stand, including WIC, Double Up Food Bucks, Fresh RX and the Senior Farmers Market Nutrition Program

I'M A FIRST TIME MOTHER AND RECEIVED VEGETABLES AND PREPPED MEALS FROM REUNITY RESOURCES. THEY WERE BROUGHT TO ME ABOUT A WEEK BEFORE I GAVE BIRTH AND IT REALLY HELPED MY FAMILY. IT RELIEVED US OF THE STRESS OF HAVING TO GO OUT AND GET GROCERIES AND THEIR PREPPED MEALS WERE REALLY YUMMY AND NUTRITIOUS FOR AFTER MY BIRTH. ALL THE VEGETABLES WERE FRESH AND ORGANIC AND IT WAS NOTICEABLE THE STAFF PUT LOVE INTO THEIR WORK. I'M GRATEFUL FOR REUNITY RESOURCES AND THEIR EFFORTS TO MAKE MY LIFE EASIER DURING MY POSTPARTUM.

-IVONE, NEW MOTHER



FOOD SYSTEMS

Solving hunger goes beyond immediate community food access programs. Our vision, in partnership with neighbors, farmers and government leaders, is to establish a secure local food system here in Santa Fe. Effective, inclusive collaborations and shared infrastructure form the fundamental basis for this system. Food and infrastructure hubs can be the core of a localized, resilient, and nourishing food system, where all people have equitable and secure access to locally grown & produced foods.

Working toward this vision, we share our greenhouse, labor, land/field space, compost, wash station, certified kitchen, refrigeration, community gathering space, food donation coordination and more with food sovereignty programs including Full Circle Farm, Black Health Equity NM, indigenous seed stewards, and other students, organizations and farms.



Reunity is all about collaborative visioning, advocacy, and practical actions to increase regenerative agriculture and improve food systems efficiencies in northern New Mexico.



REUNITY FARM

In 2023, our regenerative farm grew over 70 varieties of vegetables with over 90 varieties native and pollinator plants and trees on the land, creating robust biodiversity, an urban wildlife corridor and a shady haven for Farm Campers, visiting school groups and event attendees. 274 individual volunteers supported our hard working farm team.

Beyond our drop-in field volunteer program, over 40 groups aided the Farm, spanning the three local Rotary Clubs to dozens of school groups. Volunteers also supported us through grant writing, animal stewardship, landscaping and orchard care (pruning/harvesting), the weekly stocking of the community fridge, and collaboration to make Fall Fest exuberant.

WASTE DIVERSION

Through our Commercial and Doorstep Food Waste Collection services, we divert 1,404,910 pounds of food waste from the landfill annually: that's the CO₂ emissions equivalent to removing 823 vehicles from the road for a whole year.

Adding in the manure, wood waste and yard waste we compost, we prevented 4,018,110 pounds of organic matter from rotting in the landfill last year.

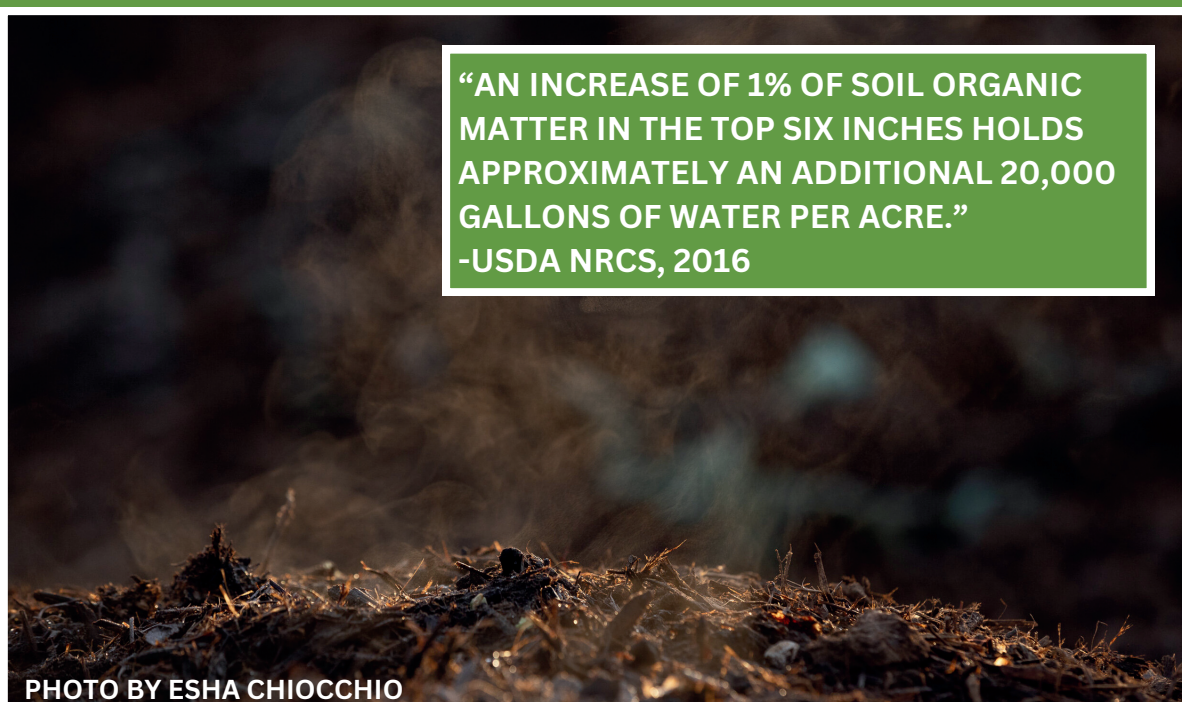
What happens next is regenerative alchemy: these wastes become valuable products that further pollution reduction and sequester carbon. We create 6 types of compost, 3 mulches and 5 soil amendment blends in the soil yard.

In 2023, we also collected 49,184 gallons of used cooking oil to be converted into biodiesel, a 35% growth since 2021.

“Over one-third of the food produced in the United States is never eaten, wasting the resources used to produce it and creating a myriad of environmental impacts. Food waste is the single most common material landfilled and incinerated in the U.S., comprising 24 and 22 percent of landfilled and combusted municipal solid waste, respectively. Reducing and preventing food waste can increase food security, foster productivity and economic efficiency, promote resource and energy conservation, and address climate change.”
-EPA



**FOOD
WASTE
DIVERTED
= 3.803.44
TONS OF
CO₂ EQ**



HEALTHY SOILS

Building healthy soils in our desertified landscape is essential for local food sovereignty and climate change resiliency. They absorb and hold water, retaining rain water where it is useful for plant roots, increasing disease and drought resistance in plants, and sequestering carbon.

Last year, our soil yard was responsible for amendments that could cover over 35 acres of land with an inch of material. This yields at least 28.54 metric tons of CO₂ equivalent in carbon sequestered.

We also provided over 70 cubic yards to school and community gardens and other food security growing projects.

In 2023, we also installed 43 backyard compost systems for interested residents in SF County, taught workshops and installed two scale-able ASPs in Mora and Taos County, and built our first Johnson-Su bioreactors in the farm, to test the NMSU-born sensation in high-fungal compost production.

COMMUNITY

Our vision is not just to grow healthy, sustainable food and to create closed-loop waste systems here at the farm—it's to inspire others to do the same. Over twenty thousand people visited the farm over the course of the season. Land, water and food are universal connectors, and Reunity offers an ideal place for reflection and celebration of all that connects us to each other and the natural world as a whole.

We hosted a broad spectrum of the community at our public events, which in 2023 included favorite local musicians, legendary storyteller Joe Hayes, bilingual cooking classes, soil health workshops, farm dinners and our popular Fall Fest. Over 500 people attend Fall Fest each year, pressing cider as a family, eating harvest soups, picking flowers and berries and enjoying wholesome fall fun on the farm.



“The Farm keeps getting better every year! Thanks for being such an asset to our community through food, music, camps, education, soil, dinners, and being a gathering ground of connection.”
-Community Member

EDUCATION

Education is one of our core values. We offer free field trips and presentations for public school groups and other organizations, and hands-on professional development with farmers, ranchers and area local governments interested in putting the principles of regenerative agriculture and community-scale composting into practice. We worked with over 40 classrooms and groups of learners of all ages in 2023. Over 300 individuals attended our free Root to Fruit farm tours.

Beyond this, we offered 157 scholarship seats and connected 316 children with their food sources at our award-winning Farm Camp. We combine aspects of music, art, science and social-emotional learning, facilitating direct interactions with our fields and farmers, sparking environmental engagement and creating lifelong memories.



My 8 year old LOVED every minute of Farm Camp. His creativity was engaged in a myriad of ways from making tie dye shirts to active dramatic play like the game Ranger, which he came home and promptly taught the whole family. He loved catching roly-polies to add to the compost and playing Drip Drip Drop. He made new friends who go to different schools and this taught him how easy it can be to make new friends and bravely try new experiences. His teacher was kind, patient, and inspiring. My deepest gratitude for creating such a healthy, loving summer camp for our children!
-Local Parent

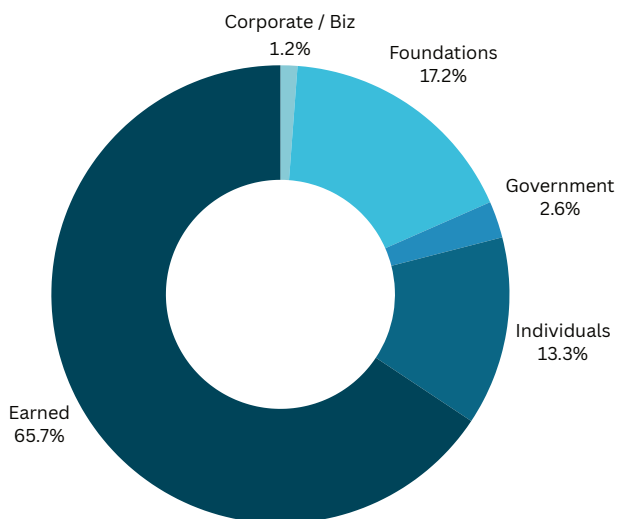




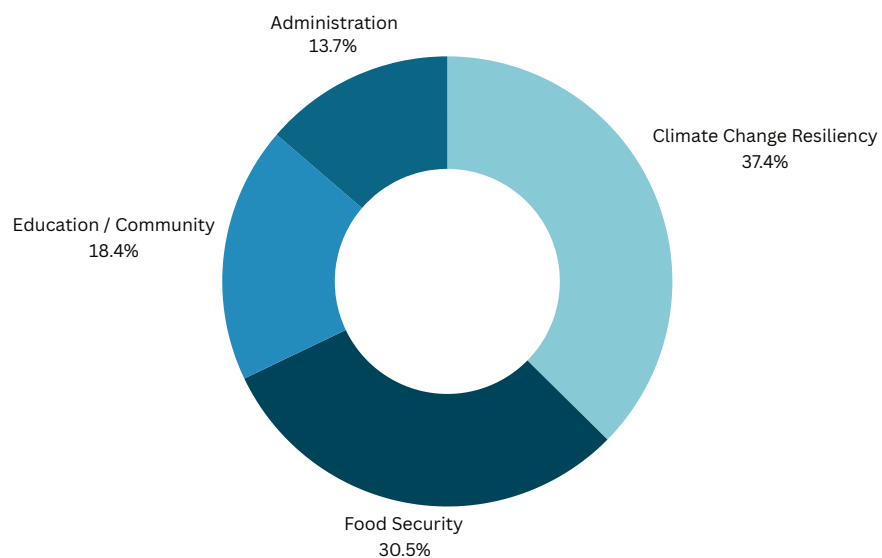
2023 BY THE NUMBERS

To ensure program sustainability and impact, we rely on diverse funding sources. Your generous support provides a harvest to many.

How We Are Funded



How We Used Funds



AWARDS THROUGH THE YEARS


- 2023 Local Hero Award for Best Farm in Central NM from Edible Magazine
- Best Of Recognitions for Best Summer Camp for Youth, Eco-living and Sustainability from the Santa Fe Reporter
- 2022 Living Land Stewards Award from the NM Food and Agriculture Policy Council
- 2021 “10 Who Made A Difference” award from the Santa Fe New Mexican newspaper
- 2019 Pinon Award for Visionary Non Profit from the Santa Fe Community Foundation
- 2017 Verde Project Award from the City of Santa Fe
- 2016 Sustainable Santa Fe Award from the City of Santa Fe
- 2015 Public-Private Partnership of the Year Award from the New Mexico Recycling Coalition
- 2015 Direct Action Award from the Climate Change Leadership Institute
- 2015 Sustainable Santa Fe Award from the City of Santa Fe



COMMUNITY PARTICIPATION MATTERS

Robust community engagement in our programming serves as a powerful testament to the meaningful impact of our work and what we can accomplish as we move forward together.





*I'VE JUST MOVED TO
TOWN AND HADN'T
FIGURED OUT MY
SUPPORT SYSTEMS
YET... THE
COMMUNITY FRIDGE
HELPED CARRY MY
FAMILY THROUGH
SOME LEAN DAYS*

*-COMMUNITY
MEMBER*

PARTNERS IN SUSTAINABILITY

BioDiesel Partners

315 Restaurant & Wine Bar
Adobo Catering
Andiamo!
Atrisco Cafe & Bar
Bang Bite Filling Station
Betterday Coffee
Blue Heron Restaurant
Boxcar
Burrito Spot
Cafe Castro
Capitol High
Chick-fil-A
Chocolate Maven
Counter Culture
Cowgirl
Crepas-oh!
Del Charro
Dinner for Two Restaurant
Dolina Bakery & Cafe
Dos Amigos Sports Mexican Restaurant
Dumpling Tea
El Nido
Estevan Restaurante
Fast & Real burritos
Four Seasons Resort
Fusion Tacos
Harry's Roadhouse
Hidden Mountain Brewing Co.
Izanami
Joe's Dining
K' Bueno
La Boca
La Casa Sena
La Choza
La Secoya de El Castillo
La Taqueria
Las Golondrinas
Las Soleras Senior Living
Manko
Market Steer Steakhouse
MorningStar Senior Living
Mucho Gusto
Palacio Cafe
Paloma
Paper Dosa
Pizzeria da Lino
Plaza Taqueria
Pollo Asado
Posa's
Ramblin' Cafe
Realburger
Restaurant Martin
Rio Chama Prime Steakhouse
Rowley Farmhouse Ales
Sabor Peruano Restaurant
Saigon Cafe
Santa Fe Bar & Grill
Santa Fe Bees Restaurant
Santa Fe Bite
Santa Fe Brewing
Santa Fe High
Santa Fe Tennis and Swim Club
Santarepa Cafe
Sassella Restaurant
Second Street Brewery
Shake Foundation
Sopaipilla Factory
Sushi8
Taco Bell
Tacos Y Mariscos El Rodeo
Tacos y Salsas
The Anasazi Restaurant, Bar & Lounge
The Club at Las Campanas
The Kitchen Table Santa Fe
The Kitchen+Bar
The Pink Adobe
The Shed
Thunderbird Bar & Grill
Tomasita's
Torogoz
Trattoria A Mano
Tumbleroot Brewery and Distillery
Vanessie Restaurant & Piano Bar
Vinaigrette
Walter Burke Catering

PARTNERS IN SUSTAINABILITY

Commercial Food Waste Collection Partners

35 North Coffee
Amanda's Flowers
Arroyo Vino
Bread Shop
Cafe Castro
Cafecito
Cottonwood Kitchen at Tesuque Casino
Cowgirl
Dolina Bakery & Cafe
El Rey Court
Four Seasons Resort
Iconik Coffee Roasters
Java Joe's
Kitchen Angels
La Choza
La Mama
La Secoya de El Castillo
Netflix Studios
Ohori's Coffee Roasters
Paloma
Restaurant Martin
Santa Fe International Hostel
Starbucks
Sweetwater Harvest Kitchen
The Kitchen Table Santa Fe
The Shed
Tumbleroot Brewery and Distillery
Walter Burke Catering

+21 Santa Fe Public Schools





COMMUNITY COLLABORATORS

Some of the Organizations who collaborated with us this past year:

Agua Fria Village Association
Black Health Equity NM
City of Santa Fe
Communities in Schools
Eldorado/285 Recycles
Future Focused Education
Healthy Soil Working Group
La Familia Southside Clinic
Lentic360
Mainstreet NM
NM Department of Health
NM Outdoor Recreation Department
NM Recycling Coalition
NM School for the Deaf
NM Department of Agriculture
NM Farmers' Marketing Association
Presbyterian Medical Services
Pojoaque-SF Soil & Water Conservation District
Queen Bee Music Association
Quivira Coalition
Rotary Clubs of Santa Fe
Santa Fe County Sustainability Department
Santa Fe Indigenous Center
Santa Fe Libraries
SF Community Yoga
SF Preparatory School
SF Farmers' Market Institute
SF Food Policy Council
SF Extension Master Gardeners
SF Public Schools
SFPS Adelante
Sprouting Kitchen
St. Michael's High School
Three Sisters Collective
UCLA Social Impact Consulting Corps
United World College
YouthWorks, Inc.

2023 DONORS

\$100,000+

Anonymous

\$50,000+

Anonymous

Just Woke Up Fund at the
Santa Fe Community Foundation
Richard Hertz & Doris Meyer Fund at the
Santa Fe Community Foundation

\$10,000+

Anonymous
Ark Foundation
Big Green DAO
fairlife
Feeding Santa Fe Inc
Irene Ritter Foundation
La Liga Foundation
Mary Wohlford Foundation
McCune Charitable Foundation
New Mexico State University
Santa Fe Community Foundation
State of New Mexico

\$5000+

Anonymous
Betsy & Tom Shillinglaw
Catherine Oppenheimer
ESSER Fund
La Montanita Coop
Meow Wolf Inc
Nusenda Foundation
SantaCafe

\$2500+

Anonymous
Cadence Design Systems
Connie Hesch, In Memory Of
Elizabeth & Ned Harris Charitable Fund
Marquita Russel
Skoll Foundation
The John Griswold Family Foundation

\$1000+

Alessandra & Steve Haines
Anonymous
Anya and Henry Bagley Fund
Christopher Watson
David Skinner
Eloy Gallegos
First Presbyterian Church of Santa Fe
Gonzalo Rufatt
Kristina Martinez
Merry Conway
Mike Brandt
Newton Coker
Nile Frederickson
Pamela Walker
Paul Winkler
Richard & Cheyenne Olson
Rick Herrman & Margaret O'Donnell
Sabrina Pratt
Scott Romans & Francis Bushhammer
TW Family Fund
Zinpro Corporation

\$500+

Anonymous
Cameron Haight Fund
Carol Madley
Constance Dry
Del Norte Lov Foundation
Gary Stoller & Kay Castelle
Georgia O'Keefe Museum
Los Alamos National Labs/Triad Security
Margaret Thompson
Matt McCafferty
Mr. and Mrs. Watson
Mrs. Snyder and Mr. McGearry
San Isidro Permaculture Inc.
Susan Dilger
The Christopher Reynolds Foundation, Inc.
Walter Burke Catering

\$100+

Aaron Lovato
 Agnes Zrakovi
 Alexandra Schroeder
 Alice McAlpine
 Alison Nichols
 Amy Regalado
 Andrea Matus-Magee
 Andy Tuch
 Angela Kent
 Anne Ferguson
 Annie Benzon
 Anonymous
 Antoinette Villamil
 Audrey LaFehr
 Bill Crane
 Brittany Adam
 Caroline Cavalie
 Caroline Kirkpatrick
 Cecilia Rios
 Charise Gonzales
 Charles Newman
 Christine Foster
 Christine Salem
 Cynthia Feiden-Warsh
 Cynthia Piatt
 Deborah Foehring
 Delaney Hall
 Denise McDonald
 Diana Brown
 Diane Brinkmann
 Donna Clark
 Dorothy & George Gamble
 Dorothy Massey
 Elizabeth Armstrong
 Elizabeth Roghair
 Eric Smith
 Eva Maria Raepple
 Gloria Chrismer
 Heather Karlson & Bill Leeson
 Heidi Cost
 Hollis Logan
 Jacqueline Waite
 Jan Moberg
 Jan Watson
 Jeffrey Thurston
 Jennifer Howard
 Jennifer Johnson
 Joan Blythe
 Joseph & Tamara Banar

Julie Strassburger
 Juliet Myers
 Karen Kott
 Karen Sweeney
 Karen Vinson
 Kate Noble
 Katherine Armijo Etre
 Kathleen Morse
 Kelly Enos
 Ken Fischer &
 Carlyn Montes De Oca
 Kevin Peterson
 Keyna Kester
 Kim Fowler
 Kirsten Oakley
 Kristen Ogden
 Lander & Tracy Burr
 Larry Hayden
 Laura Chatain
 Lauren Wade
 Laurie Canepa
 Laurrie Sostman
 Lila Mulkey
 Lily Love
 Linda Sargent
 Lisa Kantor
 Lynn Grimes
 Lynn Miller
 Lynn Pickard
 Lynn Robbie
 Marcel Legendre
 Marisela Torres ONeal
 Marshall Allen
 Mary Mitchell
 Melissa Glick
 Michael & Amy Lamar
 Mindy Thompson
 Ms. Feldman
 Nan Newton
 Network for Good
 Pamela Goodson
 Paper Dosa
 Patricia Christianson
 Patricia McNeill
 Patrick Lenz
 Peggy & Jack Seigel
 Peter McCarthy
 Philip Neufeld
 Ray Landy
 Richard & Cheyenne Olson

Robert Shearer
 Rollin & Cheryl Whitman
 Russell Baker
 Saguna Severson
 Sandra Davis
 Shannon Auge
 Sharon Crayton
 Sheila Vaughn
 Shelley Mann-Lev &
 Nahum Ward-Lev
 Sue Baum
 Sue Garfitt
 Susan Chandler
 Susan More
 Susan Steffy
 Susan Timmons
 Susan Wright
 Teague Douglas
 The Douglass Foundation
 Thomas Carr
 Tiffany Smith
 Tim & Keri Goorley
 U.S. Charitable Gift Trust
 Valerie Florez
 Vicki Maenchen
 Virginia Van Amberg
 Wendy Wilson
 William Belzner
 William Bowen
 William Wesbrooks

\$1-\$499

Abigail Feldman
 Abigail Wood
 Adair Seldon
 Adelma and Tom Hnasko
 Alona Howard
 Amanda Montgomery &
 Rick Von Kaenel
 Anne Gonzales
 Anonymous
 Asher Singer
 Ben Tremper
 Bernard Lopez
 Brianna Benner
 Carol Faure
 Cheuk-Ping Wong
 Daphne Miller
 Debra Heslin
 Denise Mansheim
 Edward Huyck

\$1-\$499 Cont.

Elege Harwood
Ellen Zieselman
Erin Darling
Gail Rackliffe
Ginna Sloane
Heidi Ogas
Jacqueline Siglin
Jan Duggan
Janet Persons
Jay and Diane Carpenter
Joan McGovern
Joy Casey
Kristin Seifarth
Leigh Rutherford
Linda Hinckley
Lindsay Taylor
Marcelle Grant
Marcy Branham
Margot Page
Marion DuBeau
Mary Burton Riseley
Meghan Davis Mercer
Michael and Carmen Duffek
Ms. Pruettt and Mr. Kennan
Nancy London Welker
Patricia Neiner
Paul Hewitt
Paulina Arredondo
Pledgeling Foundation
Priscilla Hensley
Rachel Wurst
Rebecca Hulse
Renee Cascio
Sara Sabo Anon
Shannon Baker
Shelley Horton-Trippe
Sienna Latham
Susan Drobeck
Susan Elrod
Taryn Slawson
The Blackbaud Giving Fund

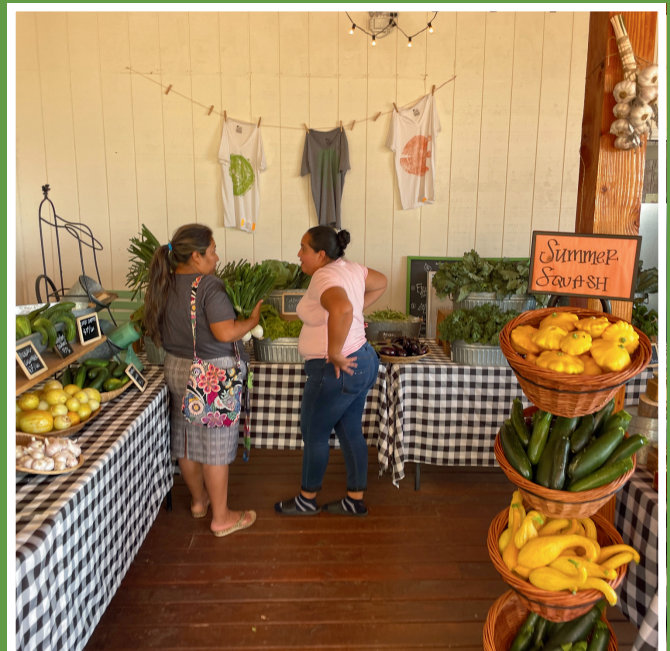


**We love supporting Reunity Resources,
knowing our donation makes both an
immediate and lasting impact right here
where we live.**

-Donor

FARM STAND PRODUCERS

Apickleypse
Beck & Bulow
BlueFly Farms Sparkling Waters
Brightway Eggs
Camino de Paz
CLC Pecans
Edensent Beauty Products
Full Circle Mushrooms
Gosar Ranch
Heart of the Desert Pistachios
Lotus Farms
Maya's Mushrooms
Mi Young's Kimchi
Montoya Orchard
Mushroom Mama
New Mexico Ferments
Olivieri Chocolate
Owl Peak Farm
Plantita Bakery
Reyah Sunshine Mushrooms
Rio Grande Grain Collective
Soul Nectar Creations
Tea.o.graphy
The Honeysuckle
The Pickle Jar
Three Sisters Kitchen Granola
Trilogy Beef
Tucumcari Cheese
Zia Sodas



2023 STAFF

Directors

Juliana Ciano
Tejinder Ciano

Managers

Jesus Barrazas-Macillas
Sian Beck
Nicole Corbo
Shannan Dunlap
Trevor Ortiz
Krista Steinhauer
Elena Walker
Uvee Witt
Charles Wolf

Backyard Compost

Emilio Borrego
Ru Stempien

Commercial Collection

Nic Arroyo
Mihai Tomozei

Doorstep Collection

Ryan Eralie
Robert Liester
Trinity Lopez
Omar Ndiaye
Jesse Penny
Niko Rael

Farm

Enoch Cincotta
Julian Espinoza
Jill Rice
Sarah Stutzke
Sam Thomas

Farm Camp

Jordan Bojorquez
Lily Clark
Mariela Rodriguez
Sophie Stibich
Jessi Walsh

Farm Stand

Lorraine Chow
Carmen Ribadaneira

Kitchen

Jen Moyer
Dave Raggio

Soil Yard

Adam Sargent



TIMELINE OF FIRSTS

- 
- 2011 Reunity Founded, Biodiesel
 - 2012 First conversations with City of Santa Fe
 - 2014 Commercial Food Waste Collection
 - 2016 Aerated Static Pile Commercial Composting
 - 2017 Backyard Composting with Santa Fe County
 - 2018 Vermicomposting, Free SFPS Field Trips
 - 2019 Farm stewardship transfer, Reunity Farm & Farm Stand
 - 2020 Full Circle Farm, Farm Fresh food programs, Doorstep Collection
 - 2021 Farm Camp, Events and Community Fridge, Farm-to-Family Meals
 - 2022 Field Volunteer Program, Farm Cards for Food Security
 - 2023 Root to Fruit Farm Tours, Eldorado Drop-off, Johnson-Su bioreactors

CORPORATE AND FOUNDATION DONORS

BIG GREEN DAO

M McCUNE
CHARITABLE
FOUNDATION

SANTA FE
COMMUNITY
FOUNDATION



cādence®

MEOW
WOLF



N^{del}orte
LOV Foundation

fa!rlife

Network **for Good**®

skoll
FOUNDATION

A stylized blue and white logo of a church building with a cross on top.
FIRST PRESBYTERIAN CHURCH
of Santa Fe

A green wavy line logo.
nUSENDA®
CREDIT UNION
The Power of WE®

A logo consisting of three interlocking loops in blue and red.
TRIAD
National Security, LLC

**Georgia
O'Keeffe
Museum**

santacafe

A logo featuring a yellow square with a white 'W' inside, surrounded by green leaves and olives.
WALTER BURKE CATERING

LA MONTAÑITA
FOOD CO-OP
See what good food can do.

A logo with the number '36' inside a circle, resembling a target or lens.
**LENSIC
THREE
SIXTY**

San Isidro Permaculture
REGENERATIVE DESIGN



A blue square with a white stylized 'Z' inside.
ZINPRO®

